

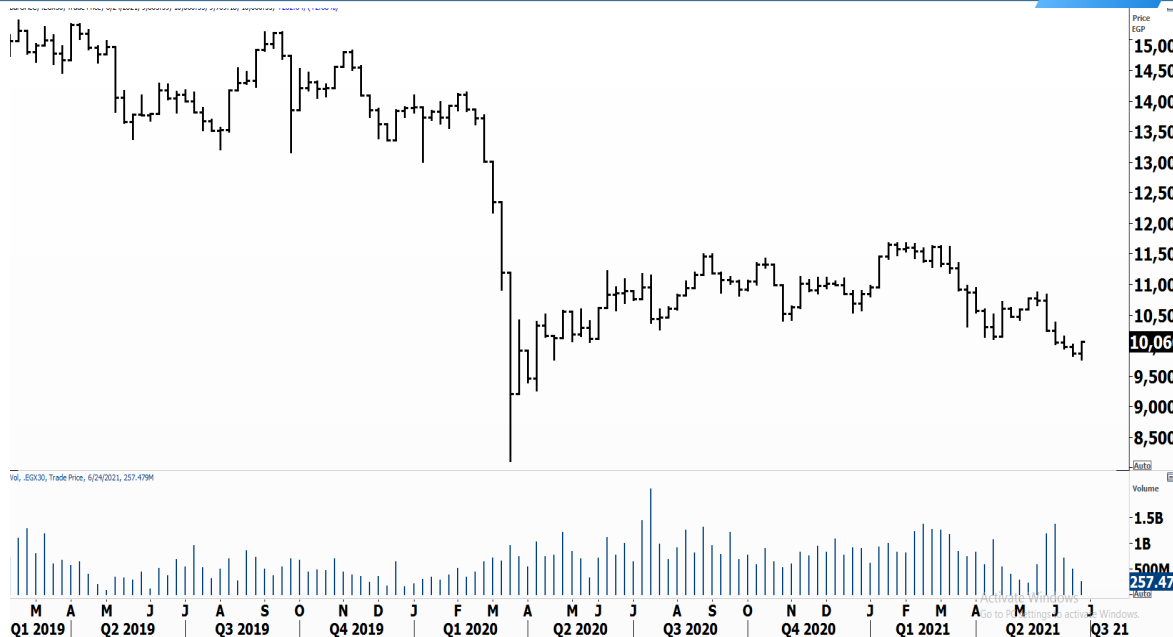


PIONEERSECURITIES

# TECH TO THE POINT

22-June- 2021

This report must be read with the disclaimer  
on the last page



Last	10,061.58
High Today	10,061.66
Low Today	9,797.91
Volume	M 184.250
First Support	9,800
Second Support	9,600
First Resistance	10,150
Second Resistance	10,400
Stop Loss	

## HISTORICAL RETURN %

1 WEEK	1.29%
1 MONTH	-6.25%
1 QUARTER	-4.51%
1 YEAR	-7.04%
YTD	-7.23%

## Analysis

Yesterday's rise is a normal rise that should not be seen as a bullish action. We want to see a market rise of course, but we need to have more strength and more confirmation. Big stocks are still weak and unable to show clear outperformance.

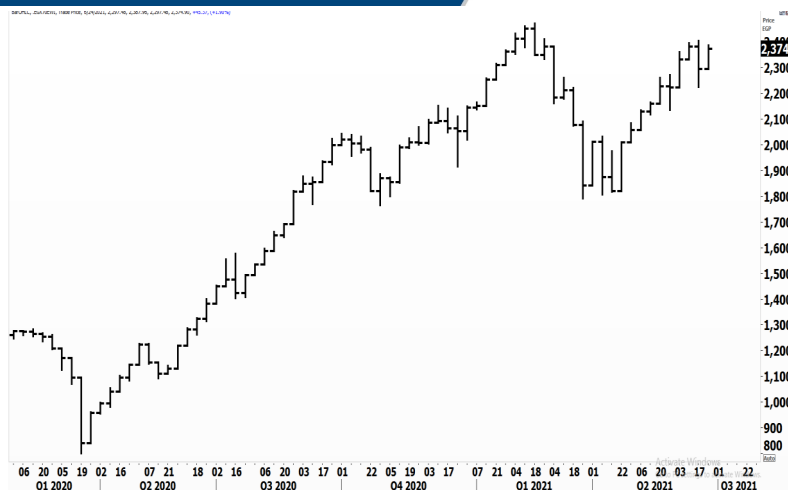
As for the EGX 30, a break above 10,150 will be the first short-term sign to step in.

## Egyptian Small Caps Index .EGX 70


## Analysis


Approaching its resistance that lies at 2,400; as we know, a clear breakout above this resistance will be bullish for small caps and will lead the index to higher levels.

Our major peak lies at 2,475, but we believe that if the EGX 70 breaks clearly above 2,400, it will also probably break its major peak and continue its uptrend.



## Resistance

**SWDY**  Broke above its resistance that lies at 8.1 and closed clearly above it with high volumes. Our target lies at 9.2. Those who want to step in can buy dips.


**AMOC**  Broke 3.08 upwards and closed above it. The stock still has a resistance at 3.25; if it breaks it, a stronger rise will probably take place.


## Support


### Testing


## Support

## Resistance

**PHDC**  The 1.72-1.75 range is a resistance area that should be watched. PHDC looks good on a longer term point of view, and is expected to witness a strong rise in the near future.

**SKPC**  The stock is struggling to break its major resistance that lies at 11.5 upwards. SKPC looks strong and will trigger an important buy signal if it confirms the breakout. Our target will be set around 15.

**EFIC**  Approaching the 14-14.35 resistance range. If EFIC succeeds to break above this resistance area it will probably witness a significant rise that can take it to 17.

**ARCC**  If the 4.8 level is broken to the upside, a buy signal will be triggered and our target will be set at 5.5. Those who want to step in are recommended to wait for the breakout first.

Symbol	S. Description	Last	Buying Area 1	Buying Area 2	Selling Area 1	Selling Area 2	Selling Area 3	Stop Loss
COMI.CA	COM INTL BK	51.00	50.25	51.40↑	52.45	53.20	54.20	48.50
ETEL.CA	TELECOM EGYPT	13.00	12.8	13.05↑	13.32	13.60	14.00	12.30
IFAP.CA	INTERNATIONAL CO FOR AGRICULTURAL	3.61	3.52	3.65↑	3.73	3.80	3.95	3.35
RREI.CA	ARAB REAL ES INV	1.18	1.135	1.185↑	1.209	1.23	1.28	1.08
KABO.CA	KABO	1.053	1.04	1.06↑	1.082	1.10	1.12	1.00
BTFH.CA	BELTON FIN HOL	2.71	2.55	2.74↑	2.80	2.87	2.95	2.40

*N.B. please note that the levels are too close as these trading opportunities only suit T+0 speculators*

*The prices that are accompanied by a green arrow in the above table show resistance levels. Thus, a break above these levels will pave the way to achieve one (or all) of the targets.*

*The area between buying area 1 and buying area 2 is a trading area.*

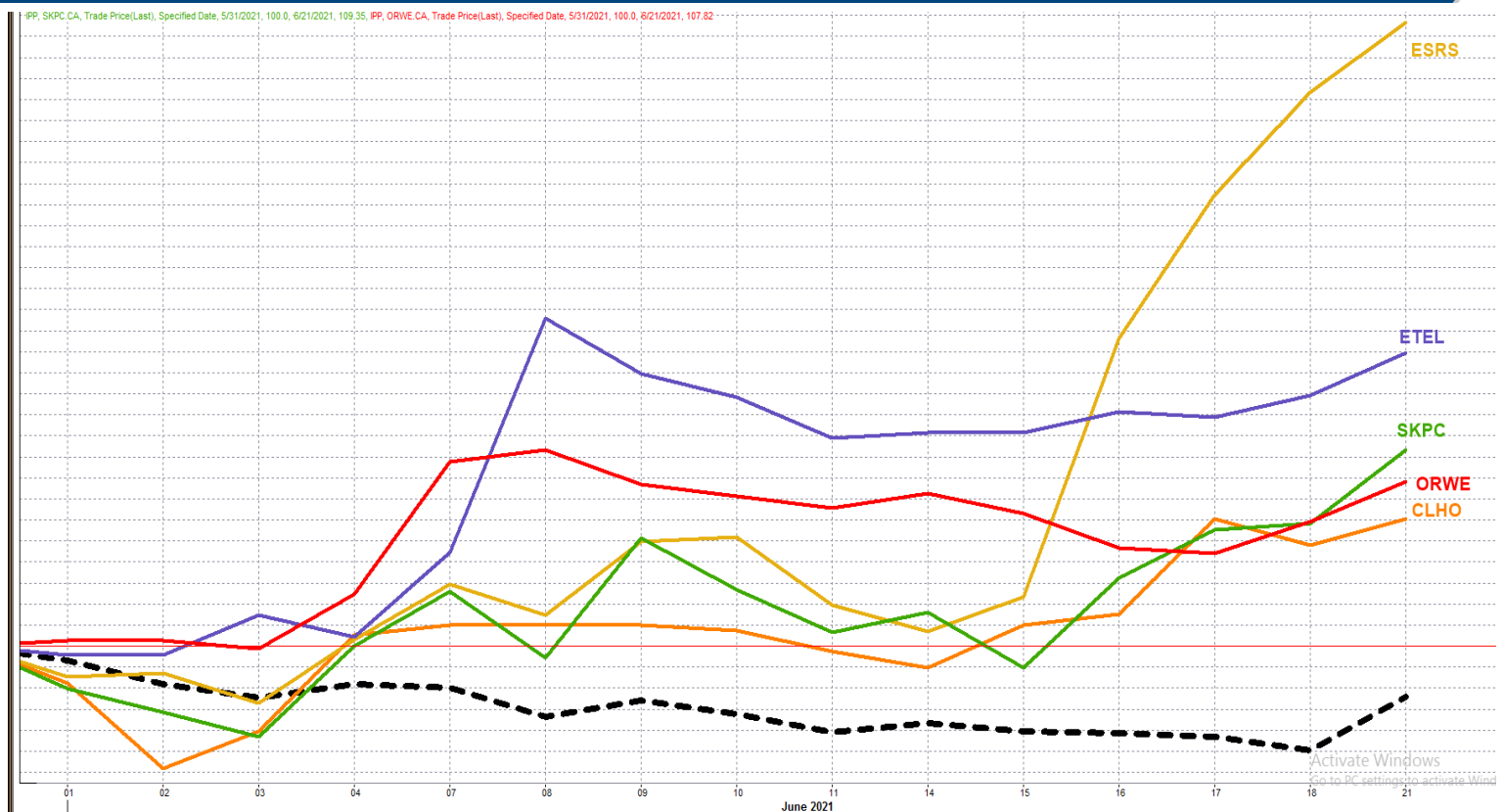
Symbol	Hit first Target	Hit Second Target	Hit Third Target	Hit Stop Loss	Triggered Buy	No Action

Yesterday's T+0/T+1 Trades



## Top 5 Performers

## EGX 30 Stocks; Past 2 Weeks



Symbol	S. Description	Last	Support 1	Support 2	Resistance 1	Resistance 2	Trend	Recommendation	Stop Loss/ Re-Entry
COMI.CA	COM INTL BK/d	51	48.5	46	51*	53.5	↓	P.SELL	53.5
FWRY.CA	FAWRY FOR BANKING TECHNOLOGY /d	19.00	18	17	19.7	21	↓	Hold	21
EAST.CA	EASTERN CO/d	12.1	11.5	11.17	12.3	12.85	↔	Hold	12.3
EKHO.CA	EGYPT KUWAIT H/d	1.011	\$0.98	\$0.96	\$1.04	\$1.06	↔	Hold	\$0.96
ABUK.CA	ABU QIR FERTILIZERS /d	18.53	18.2	17.5	19	19.7	↓	P.SELL	19.7
HRHO.CA	EFG HERMES HOL/d	13.55	13	12.7	13.7	14	↓	P.SELL	14
TMGH.CA	TALAT MOSTAFA/d	6.09	5.7	5.4	6.2	6.45	↔	Hold	5.4
SWDY.CA	ELSWEDY ELECTR/d	8.34	8	7.6	8.5	9.15	↔	P.Buy	7.6
CLHO.CA	CLEOPATRA HOSPITAL COMPANY	4.2	4.05	3.83	4.3	4.6	↔	Hold	3.83
ISPH.CA	IBNSINA PHARMA/d	3.57	3.43	3.3	3.9	4.2	↓	P.SELL	4.2
ETEL.CA	TELECOM EGYPT/d	13	12.5	12.35	13.1	13.7	↑	P.Buy	12.35
MNHD.CA	NASR CITY HOUS/d	3.36	3.15	3.06	3.35*	3.47	↔	Hold	3.47
CIEB.CA	CREDIT AGRICOL/d	22.38	22.1	21	24.2	25	↔	Hold	24.2
OCDI.CA	6TH OCT DEV IN/d	16.80	16.23	15.65	17.5	18	↔	Hold	18
SKPC.CA	SIDI KERIR PET/d	11.46	11	10.4	11.7	11.97	↔	P.Buy	10.4
CICH.CA	CI CAPITAL HOLDING COMPANY/d	3.35	3.2	3	3.5	3.8	↔	Hold	3
ORWE.CA	ORIENTAL WEAVERS /d	7.86	7.5	7.2	8.1	8.25	↑	Hold	7.2
EFID.CA	EDITA /d	8.00	7.8	7.45	8.78	9.22	↔	Hold	7.8
HELI.CA	HELIOPOLIS/d	4.56	4.5	4.3	4.93	5.05	↔	Hold	4.5
PHDC.CA	PALM HILL DEV /d	1.72	1.62	1.59	1.73	1.78	↑	Hold	1.78
AMOC.CA	ALEXANDRIA MINERAL OILS CO/d	3.11	3.03	2.8	3.18	3.28	↔	Hold	2.8
ESRS.CA	EZZ STEEL/d	13.29	12.88	12.3	13.75	14.6	↑	Hold	12.3
CCAP.CA	CITADEL CAPITA/d	1.276	1.22	1.18	1.32	1.36	↔	Hold	1.22
MTIE.CA	MM GROUP FOR INDUSTRY /d	9.17	8.8	8.6	9.66	10.2	↔	Hold	9.66
AUTO.CA	AUTO GHABBOUR /d	3.46	3.14	2.9	3.45*	3.55	↔	Hold	3.14
ORHD.CA	ORASCOM EGYPT/d	5.63	5.4	5.1	5.9	6.2	↔	Hold	5.1
OIH.CA	ORASCOM INVESTMENT HOLDING /d	0.244	0.232	0.226	0.256	0.272	↔	Hold	0.272
EMFD.CA	EMAAR MISR DEV/d	2.20	2.15	2.12	2.32	2.42	↔	Hold	2.12
EXPA.CA	EXPORT DEVELOPMENT BANK /d	13.4	13.2	12.8	14	14.6	↑	Hold	12.8

### Guidelines


**Bullish**

**Bearish**

**Neutral**

Trend: (Upgrade, Downgrade): Change in trend color refers to upgrade or downgrade in the trend relative to the previous trend direction. E.g. change from "↓ Down" to "↔ Flat" is considered an upgrade and vice versa.

**Buy:** Buy the full position.

**P.Buy:** Buy portion of a position

**Hold:** Don't Buy or sell.

**P.SELL:** Sell portion of a position.

**Sell:** Sell the full position.

**Stop Loss:** Completely exit the position (or) Re-entry in cases of Selling.

## Disclaimer

This report has been prepared according to the general data available for public, in accordance with the professional standards applied in that career to the best knowledge of the reporter. The recommendations mentioned are a guiding tool representing a professional opinion, and not granting any profits, consequently it is not obligatory for our valued customers and investors. Pioneers Securities©, Egypt shall not be liable for any direct, indirect, incidental, or consequential damages, including limitation losses, lost revenues, or lost profits that may result from these materials. Republishing this report or any of its contents is subject to prior approval; referring to the source is a must. Opinions expressed are subject to change without notice and may differ or be contrary to the opinions or recommendations of Pioneers Securities©, Egypt Research or the opinions expressed by other business areas or groups of Pioneers Securities©, Egypt as a result of depending solely on the historical technical behavior (price and volume).

## Technical Analysis Department

### Saleh Nasser

Chief Technical Strategist

### Ahmed Hassan

Senior Technical Analyst

### Dina Fahmy

Senior Technical Analyst

### Tips on reading the report

The first page includes an analysis of two major indices in the Egyptian Stock Market; the norm is that we will analyze both the EGX 30 and 70, but sometimes we will compare the EGX 30 to its 50 counterpart if there is important information in this comparison. We also use the Hermes Last Index interchangeably with the EGX 30. The .HRMSL index has an important edge; it uses last prices instead of VWAP. First thing our clients should do is to read the indices analysis carefully to have a clear understanding on our overall view.

The second page includes stocks that broke out beyond their resistance levels, and those that violated their support levels. It also includes stocks that are testing their support levels and those that are testing their resistance. This analysis is important and it is the core of our recommendations. It is important to note though that not all stocks that are testing their support levels are bullish, and not all that are testing their resistance levels are bearish. To make it easier for our clients, we have placed a bull face 🐂 if we consider the stock under study bullish, and a bear face 🐻 if we consider it bearish. We also added a big bullet 🍒 if we are neutral.

It is important to note that you might find a stock that we consider bullish in our analysis (in the breakouts/testing section) but it remains as a hold or partial sell in the table. The conflict here is that the table is more conservative. This will not be an issue with our clients, because our analysis will explain why we are being bullish/bearish on the stock.